

DESIGN = $\frac{(SIZE + WEIGHT)}{FEATURES} + \frac{1200W OUTPUT}{700W LAMP}$
X (CMY + ANIMATION) - NOISE = MAC 700





When looking at the MAC 700 Profile you might find it hard to fully comprehend just how Martin has placed so many features and so much power into a sleek moving head this compact and light.

But a compact, light, fixture with power and optical precision beyond its peers is exactly what Martin set out to achieve in the MAC 700 Profile.

Fully equipped with all the industry standard Martin features, the MAC 700 Profile also combines a full CMY color mixing system supplemented with an 8 position color wheel and a gobo animation system for dramatic projection effects.

Superior Optics

A 700 Watt, double-ended lamp works together with a tremendously efficient reflector to punch out more light than you are used to seeing in a fixture this compact.



Motorized Zoom and Focus

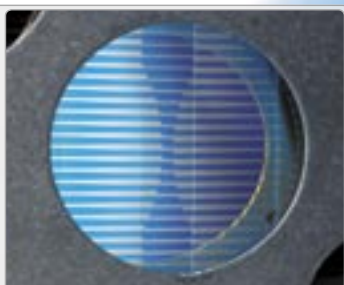
A variable motorized zoom allows for full control over the beam angle of the MAC 700 Profile. Without restrictions or lens changes the fixture zooms continuously from 14 to 30 degrees.

A variable focus system allows you to adjust the sharpness of your projection at any beam angle, whether you need a razor sharp image or a de-focused background effect.



CMY Color-mixing

A CMY color-mixing system mixes colors instantly and accurately. The system employs six coated dichroic flags providing a full spectrum of fantastic rich colors. Mechanically short distances make for extremely fast color bumps.



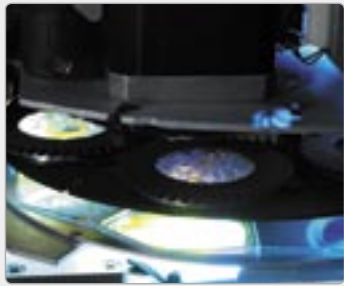
Full Gobo Animation System

A fully DMX - controlled gobo animation system - unique to a mid-sized luminaire, is specially engineered to create spectacular animated effects such as flowing water, flames or stormy skies. The system comes complete with one animation wheel, with further wheels available to expand your library. Each wheel is quickly changed via a magnetic coupling without the use of tools.



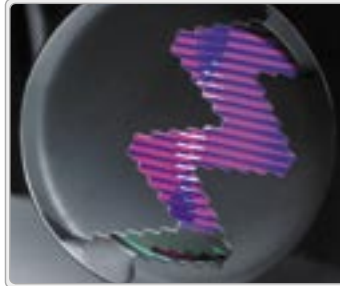
Gobos

Glass, textured glass or metal gobos fit within a six-position rotating and indexing gobo wheel, (plus open) and nine metal gobos make up a second static gobo wheel, (plus open). The combination of two gobo wheels easily allows for advanced morphing effects adding a huge range of graphical possibilities. The gobo system permits 16-bit control for extreme accuracy with all gobos easily interchangeable, removing any obstacle to your creativity.



Dimmer / Shutter

A full range dimmer/shutter is very accurate and allows for both smooth and fast intensity changes, whether it is a long fade, or a snap to blackout. In working combination as a shutter, accelerated strobe effects are possible up to 10 Hz.



8 Position Color Wheel

As well as the CMY color mixing system the MAC 700 Profile features a separate color wheel with eight slots plus open. Color selections may be changed quickly and easily, offering a seemingly limitless array of color combinations.



Iris and Prism

A bi-directional, 3-facet prism rotates at variable speeds, adding unique effects to gobo projection. The prism can also be replaced giving lighting professionals further options for customization. A motorized iris allows you to resize the beam quickly and accurately for fast effects with smaller beam sizes.



Electronic Ballast

The PFC Electronic ballast provides the MAC 700 Profile with a flicker free image making it ideal for television and film work. It also allows hot lamp re-strikes and for the fixture to run in a reduced power mode; extending lamp life and further reducing its low noise output.



Switch Mode Power Supply

An auto-sensing power supply covers worldwide voltages and frequencies allowing the fixture to operate anywhere in the world.



Quiet Operator

The MAC 700 Profile contains head and base temperature sensors to ensure that fan speeds are kept to a minimum; bringing noise levels right down to suit theatre and TV studio applications.



Pan & Tilt

540 degree pan and 246 degree tilt are achieved through Martin's outstanding pan and tilt motors which give faster-than-ever movement for a fixture of this size with noticeably less noise than other fixtures on the market. An intelligent positioning correction system automatically returns the MAC 700 Profile to its original position should it accidentally be knocked out of place while a multi position, tilt lock mechanism is also featured to permit easy maintenance and handling.



Modularity

An exceptionally functional modular design allows you fast and easy, tool-free access to critical components of the fixture.

This reduces maintenance periods, saving time and money, and ensures that fixtures spend as much of their life as possible performing.



Transportation

The Martin flight case, designed for the MAC family, is recognized in the industry as one of the best purpose-built cases for the transportation of lighting fixtures. Made of durable ply, it is covered in a tough water-repellent coating for added protection.



New Adaptor

An ingenious, patented universal adaptor allows axle friendly clamping that preserves the surface and shape of the fixtures hardware like no other can. A direct development from our hands-on approach, this is a device which whilst small, can save many hours in maintenance time and has been specified by the needs of the market.



Communications

The MAC 700 profile is DMX512-controllable, equipped with both 3-pin and 5-pin XLR in/out sockets, and totally compatible with coming future standards such as ACN or Ethernet-based protocol.





PHYSICAL

- Length: 450 mm (17.7 in)
- Width: 365 mm (14.4 in)
- Height: 636 mm (25.0 in)
- Weight: 34.5 kg (75.9 lbs)

BEAM EFFECTS

- High speed replaceable rotating 3 facet prism
- Motorized iris, 8 or 16 bit control

DIMMER/SHUTTER

- Full-range dimming
- Variable shutter speed: 2Hz to 10Hz, 8 bit control

COLOR MIXING

- Cyan: 0-100%, 8 or 16 bit control
- Magenta: 0-100%, 8 or 16 bit control
- Yellow: 0-100%, 8 or 16 bit control

COLOR WHEEL

- 1 motorized color wheel, fitted with 8 replaceable colors, plus open, 8 or 16 bit control

PAN/TILT

- Pan: 540 degrees, with 16 bit control
- Tilt: 246 degrees, with 16 bit control
- Positional correction system

GOBOS

- Rotating gobos: 6 positions plus open with continuous and indexed rotation, 16-bit control
- Static gobos: 9 positions plus open, 8 bit control

GOBO ANIMATION WHEEL

- Vertical, horizontal or diagonal
- Vertical, horizontal or diagonal animation effects.
- Indexed and variable speed continuous rotation, 8 or 16 bit control

FOCUS

- Motorized focus from 2m to infinity, 8 or 16 bit control

ZOOM

- 14° - 30°, 8 or 16 bit control

OPTICS

- Light output: 14700 lumens with removable diffuser lens (standard setting)
- 16700 lumens without diffuser lens
- Glass cold light reflector
- Beam angle: 14° - 30° (focused on open gobo)
- Focal length: 46 - 100 mm

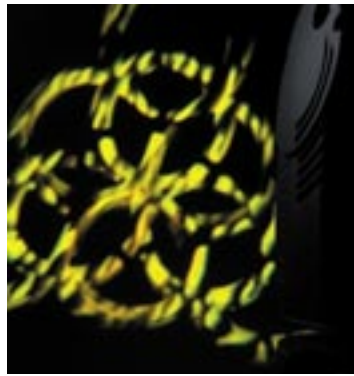


SOURCE

- Lamp: 700 W short arc discharge
- Base: double-ended SFC 10-4 with key
- Approved models: Osram HTI 700/D4/75
- Ballast: electronic

CONSTRUCTION

- Housing: UV-resistant fiber-reinforced composite shell
- Shock resistant chassis
- Ergonomic carrying handles
- Color: black
- Protection factor: IP 20



CONTROL

- Protocol: USITT DMX-512 (1990)
- Control channels: 23 or 31
- Receiver: opto-isolated RS-485
- Data I/O: locking 3-pin & 5-pin XLR, pin 1 shield, pin 2 cold (-), pin 3 hot (+)
- Setting and addressing: LED control panel, remote w/ DABS1 or MP-2 uploader
- Movement control: tracking and vector
- Software installation: serial upload (MUF)

COOLING

- Low noise cooling
- Fan speed regulation mode
- Maximum ambient temperature (Ta): 40° C (104° F)
- Maximum surface temperature: 160° C (320° F)
- Total heat dissipation: 2200 BTU/hr

RIGGING

- Mounts in any orientation with 2 clamps
- Convenient 1/4 turn fastener clamp attachment
- Stands directly on the floor

ELECTRICAL

- AC input: 3 m trailing cable w/o cord cap
- Operating range: 100 - 130 VAC / 200 - 250 VAC, 50/60 Hz
- Power supply: auto-ranging electronic switch-mode
- Main fuse for 200 - 250 V: T 6.3 A
- Main fuse for 100 - 130 V: T 15 A

INCLUDED ITEMS

- Lamp: Osram HTI 700/D4/75 (installed)
- Fuse for use with 200 - 250 V power: T 6.3 A fuse (installed)
- Fuse for use with 100 - 130 V power: T 15 A
- Clamp attachment brackets: 2 quarter-turn Omega
- Gobo animation wheel - Radial breakup (installed)
- Color filters: 8 pieces (installed)
- Gobos: 14 aluminum, 1 glass (installed), 5 extra aluminum gobos + 1 extra spring
- User manual
- Martin cables

ACCESSORIES/OPTIONS

- Spiral breakup animation wheel: P/N 62325049
- Linear breakup animation wheel: P/N 62325050
- Coarse tangential animation wheel: P/N 62325051
- Cloud breakup animation wheel: P/N 62325094
- Elliptical breakup animation wheel: P/N 62325095
- Half-coupler clamp: P/N 91602005
- G-clamp: P/N 91602003
- DABS 1 Uploader: P/N 91611144
- MP-2 Uploader: P/N 90758420
- MAC 500/550/700 size stock gobos: see www.martin.com

ORDERING INFORMATION

- MAC 700 Profile in cardboard: P/N 90207000
- MAC 700 Profile in flight case: P/N 90207001

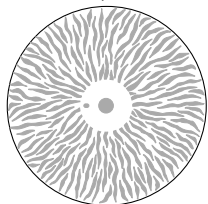
POWER AND CURRENT CONSUMPTION

- @ 100 V AC, 60Hz 1019 W, 10.3 A
- @ 120 V AC, 60Hz 988 W, 8.3 A
- @ 208 V AC, 60Hz 949 W, 4.7 A
- @ 230 V AC, 50Hz 944 W, 4.2 A
- @ 250 V AC, 50Hz 940 W, 4.0 A

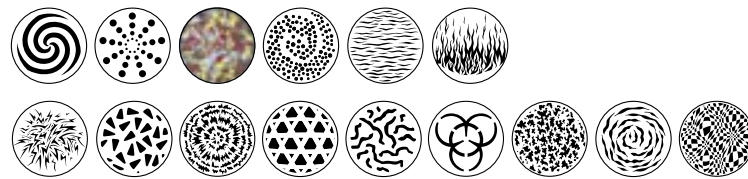
TYPICAL POWER AND CURRENT

Electronic ballast				
Volt	Hz	Watt	Amp	power factor
100 V	60 Hz	1019 W	10.3 A	PF 0.99
120 V	60 Hz	988 W	8.3 A	PF 0.99
208 V	60 Hz	949 W	4.7 A	PF 0.98
230 V	50 Hz	944 W	4.2 A	PF 0.97
250 V	50 Hz	940 W	4.0 A	PF 0.97

Standard disk in animation system



Standard gobos



Additionally supplied, classic 'mid-air' gobos

